

Disk2File V1.31

User's manual

Table Of Contents

I - WHY DISK2FILE ?	3
I - 1 - A SMALL HISTORY...	3
I - 2 - WHAT TO USE DISK2FILE FOR ?	3
II - TECHNICAL SPECIFICATIONS	4
II - 1 - GENERAL SPECIFICATIONS:	4
II - 2 - DISK2FILE CAN BE USED FOR SEVERAL TASKS:	4
III - INSTALLING THE SOFTWARE	4
IV - DISCOVERING THE USER INTERFACE	5
IV - 1 - SOURCE DEVICE SELECTION	5
IV - 2 - SOURCE DEVICE INFOS	5
IV - 3 - TARGET DEVICE SELECTION	5
IV - 4 - TARGET DEVICE INFOS	5
IV - 5 - IMAGE FILE NAME AND LOCATION TO READ (OR WRITE)	6
IV - 6 - SIZE OF TRANSFERT	6
IV - 7 - OPERATING MODE	6
IV - 8 - ACTION ZONE	6
V - TUTORIAL : HOW TO MAKE A SAMPLER CD	7
V - 1 - SAMPLER PREPARTION:	7
V - 2 - CONNECTING THE PREPARED DEVICE TO YOUR COMPUTER	7
V - 3 - PREPARING DISK2FILE OPERATION	7
VI - DISK2FILE LICENSE AGREEMENT	8
VI - 1 - DISK2FILE DISTRIBUTION:	8
VI - 2 - EVALUATION AND REGISTRATION:	8
VI - 3 - SUPPORT:	9

I - 1 - A small history...

I was looking for a tool able to help me to archive my sampler sound banks to a CDROM. I looked to products able to do that, but I couldn't find any... So I tried to have more information about sampler CDROM format to make my own archive software.

After asking to many people on the Web (Akai Japan, EMU US, Roland Japan and various CD-ROM manufacturers) it appears that the file system used in the samplers CD-ROM was totally proprietary. I found that it was exactly the same used for sampler hard disks. So why not build the CD-ROM content to an Hard disk connected to the sampler and copy it to a CD-ROM ? I tried and it worked.

In fact, that's the method used by sample CD manufacturers to make their prototyping. At that day, there's no CD-ROM recording software able to do that with a PC. On the Mac, Gear or Toast Pro are able to record a disk using a hard disk as source. Because I don't want to buy an other computer, I wrote disk2file.

Later, I modified the software to duplicate or archive hard disk content because I'm also a Linux user and it's the quickest way I found to duplicate a Linux hard disk..

I - 2 - What to use Disk2File for ?

Disk2File have been designed for SCSI disk users. It's primary use was to help to build CDROM for samplers, but three main functions are included in the software :

- Read a SCSI disk using a binary sector per sector method and writes content into a file. Length can be specified (starting at sector 0).
- Read a file and writes it to a SCSI disk using the same binary method. Length can be specified also (up to file or disk size).
- Execute a binary copy from one disk to another.

II - Technical specifications

II - 1 - General specifications:

- Works on Windows 95, Windows 98, Windows NT (workstation and server) with Adaptec ASPI 32 Layer.
- Support up to 4 controllers (normal, Wide, Ultra Wide or U2W).
- Transfert buffer up to 64 K bytes lenght fully configurable.
- Reports any device installed, performing an SCSI Inquiry.

II - 2 - Disk2file can be used for several tasks:

- Read a sampler hard disk and build an ISO file to record a sampler CD-ROM.
- Read a CD-ROM using a SCSI CD-ROM reader to store the image file for recording later.
- Copy very quickly a SCSI disk (speed is close to media transfer rate) to an other for production purpose. It can be used for example to duplicate well done configurations of any operating systems. Because Dis2file don't care of file system, this duplication can be done for OS9, DOS, Windows 3.1, Windows 95, Windows NT, OS/2, Mac OS, Sampler's file systems, Linux, Solaris.....
- Binary backup/restore a whole disk (before installing a new operating system for example).
- Duplicating Zip, Syquest on any removable media.
- Read inquiry informations without additionnal tools.

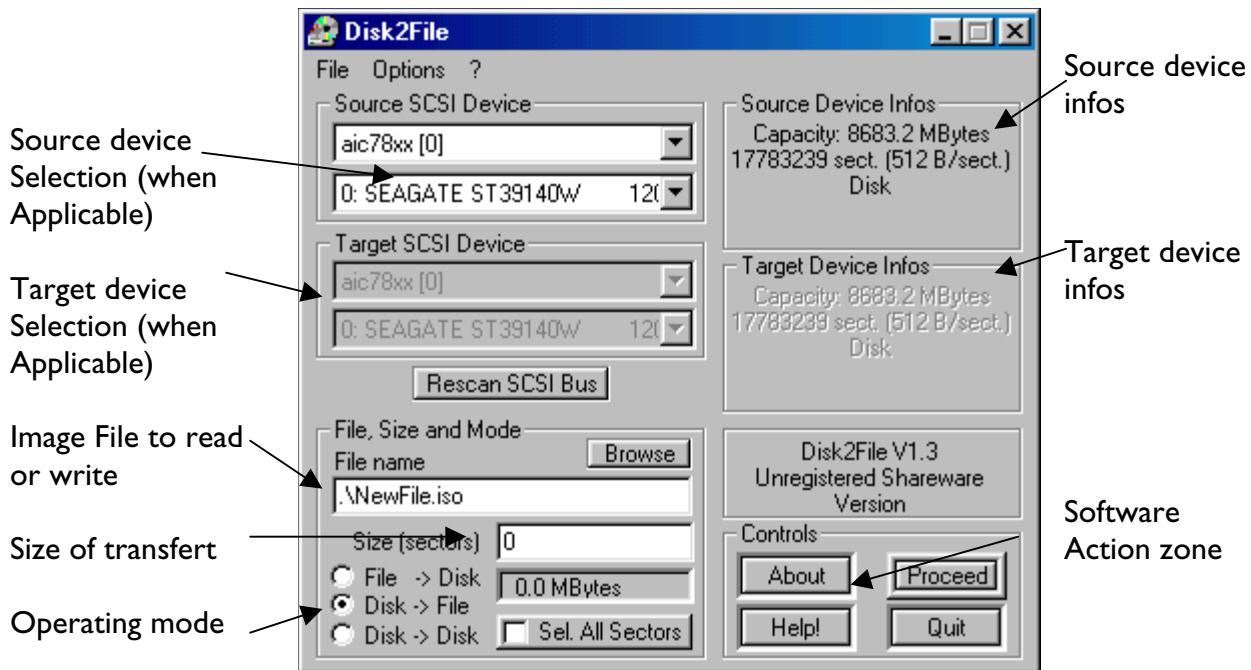
III - Installing the software

First of all, you should have an ASPI Layer (Adaptec Standard Protocol Interface) installed on your machine. If not, and for Windows 95/98, you can get it from the Adaptec FTP site (<ftp://ftp.adaptec.com/pub/BBS/win95/aspi32.exe>). For windows NT, you should check ftp://ftp.darmstadt.gmd.de/pub/pc/win95/driver/scsi/adaptec/aspi_me.exe

ASPI explanation get be retried from <http://www.ncf.carleton.ca/~aa571/aspi.htm>.

To Physically install Disk2file, launch the setup.exe and follow instructions.

IV - Discovering the user interface



IV - 1 - Source Device Selection

This zone must be used to select the source device to read (Disk2File mode selected in Operating mode) or copy (Disk2Disk is selected in operating mode). When inserting new devices on the SCSI, device list can be refreshed by pressing the 'RESCAN SCSI BUS' button.

IV - 2 - Source Device Infos

This area displays extended information about the source device selected in 'Source Device Section'. Information includes total disk capacity in mega bytes and sectors, Sector size in bytes per sector and type of SCSI device. Device can be a cdrom, a removable media, a harddisk, a SCSI floppy disk...

IV - 3 - Target Device Selection

This zone must be used to select the target device to write (File2disk mode selected in Operating mode) or copy (Disk2Disk is selected in operating mode). When inserting new devices on the SCSI, device list can be refreshed by pressing the 'RESCAN SCSI BUS' button.

IV - 4 - Target Device Infos

This area displays extended information about the source device selected in 'Source Device Section'. Information includes total disk capacity in mega bytes and sectors, Sector size in bytes per sector and type of SCSI device. Device can be a cdrom, a removable media, a harddisk, a SCSI floppy disk...

IV - 5 - Image file name and location to read (or write)

Depending to the selected operating mode, image file name can be :

- Name of the file to be written from selected source device read (disk2file mode)
- Name of the file to raw write to selected target disk (file2disk mode)

File name can be directly typed in the appropriate zone or selected using the browse button. For disk2file mode, the file must not exist. For file2diskmode, the file must exist and not be null sized.

IV - 6 - Size of transfert

This area must be filled with the numbers of sectors to transfert. This can be the total amout of disk sectors. Disk2file will automatically add blanck sectors at the end of file to make file size multiple od 2048 bytes. This is necessary for some recording programs like CDRWIN.

IV - 7 - Operating mode

This area is to select the operating mode of the program:

- Disk2file: [Size of transfert]sectors are read from [source disk] to produce and [image file].ISO
- File to disk: [Selected file] is written to [target device]
- Disk2disk: [Selected source disk] is written to [target disk] for [size of transfert].

IV - 8 - Action Zone

Several buttons are available in this zone to have help, to get the About box, to Quit and to process the selected mode.

V - Tutorial : How to make a sampler cd

V - 1 - Sampler preparation:

To prepare the operation, you should connect a hard disk, or a removable scsi media to your sampler. Your device should be SCSI.

After partitioning and formatting your device with the operating system of the sampler, fill it with your best sound sets.

V - 2 - Connecting the prepared device to your computer

Connect the disk to the PC AFTER BOOTING WINDOWS. (This is to walk around a plug and play bug of 95 : windows writes sector zero of all disks connected with a special pattern to identify if disk changed). To see the SCSI disk in Windows 95 /98, use the Control panel, System, Drivers, Refresh button. To do the same in windows NT, use Disk administrator.

V - 3 - Preparing disk2file operation

- Select appropriate operating mode (Disk2file must be checked)
- In Source SCSI Device, select appropriate SCSI controller and disk
- Verify in Source device info the drive you've just selected
- Select a target file to write with the browse button. ISO extension is provided by default, but you can change it depending of the recording software you're using.
- Select desired sector size. A CDROM is not more than 650MB, but Akai and EMU just use 500 Mb. You can use the select all sectors checkbox if all disk content is to be read.
- Click on Proceed button to execute the action. A dialog will be displayed indicating the current completion status.
- After completion, you'll have a file with exactly the selected size.
- Use the your recording software to write your iso image. CDROM type must be a CDROM Mode I.

Note: If you don't know what cdrom recordingssoftware to use, you should try CDWIN from Golden Hawk Technology (<http://www.goldenhawk.com>). There's an avaluation version limited to 1x speed for 30 days. It's probably the most versatile CD recording software I knows, and it works perfectly with Disk2File.

VI - Disk2File License Agreement

Disk2File, copyright 1996,97,98,99 by Jean-Philippe CIVADE, is a SHAREWARE product. This help topic contains legal binding information about licensing, registration and distribution of Disk2File. If you do not agree with the conditions and rules stated in this text, please remove your copy of the Disk2File software.

The term "SHAREWARE version" identifies the complete package containing the Microsoft Windows version of Disk2File. By complete package we mean: Disk2File's executable file, associated PDF help file, dll's and registration form files. The term "SHAREWARE copy" identifies an instance of the SHAREWARE version.

VI - 1 - DISK2FILE Distribution:

1. SHAREWARE copies may be freely distributed by individual users for trial utilization.
2. SHAREWARE copies may be uploaded to Bulletin Board Systems, FTP sites, Usenet newsgroups and any network sites providing its users with access to download it for trial purposes. Bulletin Board Systems should restrict downloading charges for the SHAREWARE version to flat rate connection fees.
3. SHAREWARE copies may NOT be distributed in CD-ROM disks, diskettes or any other media, without express authorization of the author, the single exception being case (3) above. Authorization for distribution may be obtained in the form of a specific "Non-exclusive Distribution License Agreement", signed by the author of the software.
4. SHAREWARE copies may NOT be distributed with any software package, or be systematically recommended to users of any software system or service, without express authorization of the author. Authorization for distribution may be obtained in the form of a specific "Non-exclusive Distribution License Agreement", signed by the author of the software.
6. REGISTERED versions may only be distributed by the author of Disk2File, or by distributors who have obtained a specific "Non-exclusive Distribution License Agreement", signed by the author of the software.

VI - 2 - Evaluation and Registration:

This is not free software. You are hereby licensed to use this software for evaluation purposes without charge for a period of 30 days. If you use this software after the 30 day evaluation period a registration fee of 30 US dollars or 150 French Francs is required.

You can register electronically from RegNow! with a international credit card. To do that, use <https://www.regnow.com/softsell/nph-softsell.cgi?item=2410-1> Product will be delivered by email within 24hours.

You can also pay by International money orders or cash sent to:
Jean-Philippe CIVADE
190 bis Avenue de Lodeve
34000 MONTPELLIER
FRANCE

When payment is received you will be sent a registered copy of the latest version of Disk2File. Unregistered use of Disk2File after the 30-day evaluation period is in violation of France and international copyright laws.

VI - 3 - Support:

You can contact the author by mail (jp.civade@zicweb.com) or by phone at +33(0)686816838. See also on line FAQ (http://www.zicweb.com/d2file_faq.html) or disk2file home site (<http://www.zicweb.com>)